

Raked Column

Round Conical

Description and Specification

Valmont Structures Raked Columns are a range of conical steel lighting columns that are tilted 5 degrees from vertical. This subtle modification transforms standard into bespoke and creates a powerful visual impact. Seamless weld technology is used to produce a column with a nearly invisible weld. The absence of a vertical seam elevates the aesthetic of the column giving it a more modern and contemporary feel.

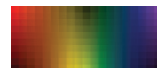
SWT conical steel columns available in a variety of conicities from 10mm to 17mm/m taper rates and mounting heights from 4 to 12 metres. Raked Columns be used for post top and side mount applications and can support multiple projectors. Valmont operates a Quality Assurance system which complies with requirements of BS EN ISO 9001. Our welders and welding procedures are independently certified in accordance with EN ISO 9606 and EN ISO 15607.



Galvanized Steel

Finishing Options

As a standard, Valmont steel columns are galvanized to extend product longevity. Valmont offers several decorative finishing options including polyester power coating, wet painting, and sublimation. For more information contact your local Valmont representative.



RAL and AkzoNoble colour systems are available upon request.

Raked Column *Round Conical*

Flange Plated Dimensions

	Height (m)	Top (mm)	Base (mm)	Height (mm)	Width (mm)	Position (mm)	Mounting Arrangement	Projection (m)	Width (mm)	Bolt Circle (mm)	Anchor Bolts
	4	76	173	500	100	700	SA	1	260	200	M18 x 400
	5	76	190	500	100	700	SA	1	260	200	M18 x 400
	6	76	207	500	100	700	SA	1	420	300	M24 x 820
	8	76	241	600	115	700	SA	1	420	300	M24 x 820
1m Finial	10	76	275	600	115	700	SA	1	420	300	M24 x 820
	12	76	309	600	115	700	SA	1	420	300	M24 x 820

Headload Capacity

Height (m)	Mounting Type	Projection (mm)	Mass (kg)																			Foundation Size (m)	Concrete Ø (mm)		
				22m/s		24m/s		26m/s		28m/s		30m/s		32m/s		34m/s		36m/s							
				II	I	II	I	III	II	I	III	II	I	III	II	I	III	II	I					M	T
4	SA	0.5	30	0.81	0.60	0.64	0.47	0.61	0.51	0.38	0.49	0.41	0.30	0.41	0.34	0.24	0.34	0.27	0.19	0.15	0.12	5.94	1.55	0.4 x 0.7	-
5	SA	0.5	30	0.91	0.70	0.72	0.54	0.75	0.58	0.43	0.61	0.46	0.35	0.50	0.38	0.28	0.41	0.31	0.22	0.17	0.14	8.24	1.88	0.5 x 0.8	-
6	SA	0.5	30	0.98	0.76	0.77	0.59	0.85	0.62	0.46	0.70	0.49	0.38	0.57	0.41	0.30	0.47	0.33	0.23	0.18	0.14	10.71	2.19	0.5 x 0.9	-
8	SA	0.5	30	1.57	1.26	1.26	1.01	1.49	1.03	0.83	1.24	0.85	0.67	1.04	0.71	0.55	0.87	0.59	0.44	0.37	0.3	20.406	3.325	0.6 x 1.2	-
10	SA	0.5	30	1.73	1.41	1.39	1.13	1.6	1.14	0.9	1.32	0.93	0.73	1.1	0.76	0.58	0.92	0.62	0.46	0.37	0.29	29.333	4.185	0.7 x 1.4	-
12	SA	0.5	30	1.83	1.5	1.46	1.16	1.65	1.16	0.89	1.33	0.91	0.69	1.09	0.72	0.51	0.87	0.55	0.37	0.25	0.15	35.483	3.958	0.8 x 1.4	-

All dimensions and technical information given as an indication. Valmont reserves the right to make, without delay and without prior notice, the technical or aesthetic modifications that it deems necessary to improve the products of the Standard Collection.

* Mounting Arrangement Abbreviations: PT = Post Top, SA = Single Arm, DA = Double Arm, QA = Quad Arm, FL = Floodlight, SE = Side Entry, CB = Crossbar, CR = Crown, PF = Platform, OT = Other

* Speeds given are basic 10 minute mean wind speeds in 2m/s increments, if national wind speeds lie between these figures please interpret using linear interpolation.

* **M** = Bending moment at baseplate, **T** = Shear force at baseplate.